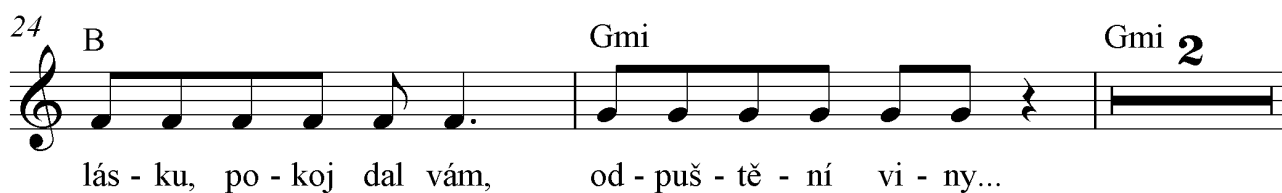
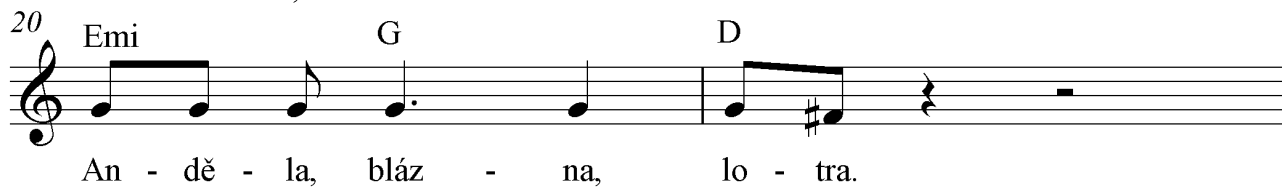
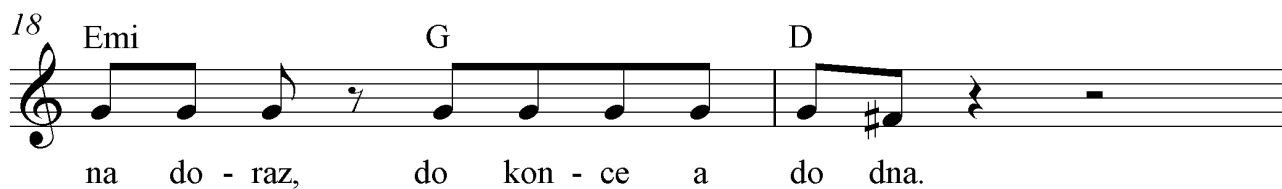
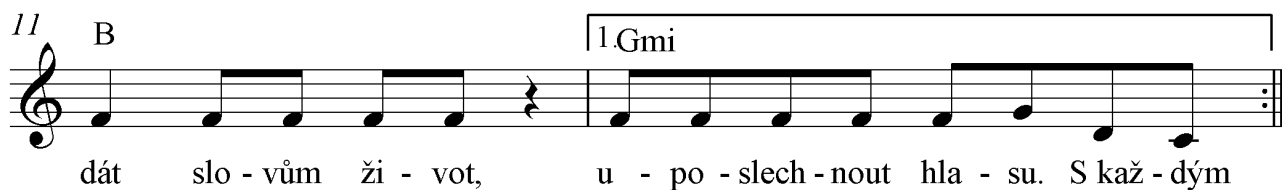
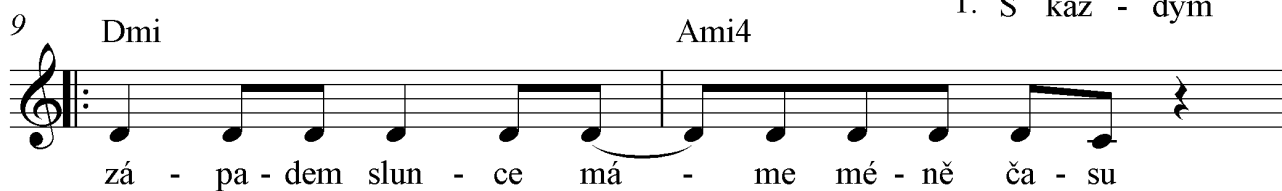
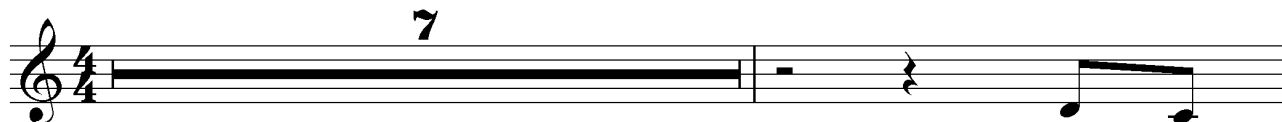



Jako já

jph & lmjk



31 B 1. Gmi




_dát slo - vům ži - vot, u - po - slech - nout hla - su. S kaž - dým

33 2. Gmi Dmi




u - po - slech - nout hla - su. Ja - ko já vás mi - lo -

35 Ami4/E Gmaj C2




val, ja - ko já vás mi - lo - val,

38 Emi G D



na do - raz, do kon - ce a do dna.

40 Emi G D




An - dě - la, bláz - na, lo - tra.

42 Dmi Ami4/C




Za ka - me - ny, po - mlu - vy, všech - ny špat - né či - ny,

44 B Gmi




lás - ku, po - koj dal vám, od - puš - tě - ní vi - ny... Ja - ko

46 D G/E D/Fis



já vás mi - lo - val, dá - vej - te lás - ku dál.

49 3x G 4. G



Ja - ko dál.