

Zdeněk
POLOLÁNÍK

AVE MARIA

pro soprán

AVE MARIA

Zdeněk Pololánik

Andante

Soprano

Organ

Andante

sempre molto legato

4

S.

A - - - - - ve Ma -

Org.

7

S.

ri - - - - a gra - - -

Org.

AVE MARIA

10

s. ti - a ple - - - na

Org.

13

s. Do - - - mi - - - nus - - - te - - -

Org.

16

s. cum Do - - - mi - - - nus - - -

Org.

19

S. te - - - cum. te - - -

Org.

22

S. cum. Do - - - mi - - - nus

Org.

25

S. te - - - cum, be - - - ne -

Org.

28

S. - di - cta tu in mu - li - e - ri - bus

Org.

31

S. et be - ne - di - ctus fruc - tus

Org.

34

S. ven - tris tu - i Je - sus.

Org.

37

S.  San - cta Ma - ri - a, Ma - ter

Org. 

Detailed description: This system contains measures 37, 38, and 39. The vocal line (S.) is in a soprano clef with a key signature of two flats (B-flat and E-flat). The lyrics are "San - cta Ma - ri - a, Ma - ter". The organ accompaniment (Org.) consists of a right-hand part with a continuous eighth-note pattern and a left-hand part with a simple harmonic accompaniment.

40

S.  De - i, o - ra pro no - bis

Org. 

Detailed description: This system contains measures 40, 41, and 42. The vocal line (S.) continues with the lyrics "De - i, o - ra pro no - bis". The organ accompaniment (Org.) maintains the same rhythmic and harmonic structure as the previous system.

43

S.  pec - ca - to - ri - bus nunc et in

Org. 

Detailed description: This system contains measures 43, 44, and 45. The vocal line (S.) begins with the lyrics "pec - ca - to - ri - bus nunc et in". The organ accompaniment (Org.) continues with the established accompaniment.

46

S. ho - ra mor - tis no - strae,

Org.

49

S. nunc et in ho - ra mor - tis no -

Org.

52

S. strae. A - - - -

Org.

54

S.

men.

Org.

The image shows a musical score for Soprano (S.) and Organ (Org.) starting at measure 54. The Soprano part is in a treble clef with a key signature of two flats (B-flat and E-flat). It begins with a half note G4, followed by a quarter rest, a quarter note G4, and a quarter rest. The Organ part consists of two staves: a right-hand treble staff and a left-hand bass staff. The right-hand staff starts with a sixteenth-note triplet (F4, E-flat4, D4), followed by eighth notes (C4, B3, A3, G3, F3, E3, D3, C3), and then a half-note chord (F3, C3). The left-hand staff starts with a half note (F3), followed by a quarter note (E3), a quarter note (D3), and a half-note chord (F3, C3). The organ accompaniment concludes with a half-note chord (F3, C3) in both hands.

Soprano

AVE MARIA

Zdeněk Pololánik

Andante $\frac{4}{4}$

A - ve Ma - ri - a gra - ti - a ple -

12

- na Do - mi - nus_ te - cum Do - mi - nus_ te -

20

cum. te - cum. Do - mi - nus_ te - cum, be - ne -

28

- di - cta tu in mu - li - e - ri - bus et be - ne - di - ctus fruc - tus ven - tris tu - i Je -

35

sus. San - cta Ma - ri - a, Ma - ter De - i, o - ra pro no - bis

43

pec - ca - to - ri - bus nunc et in ho - ra mor - tis no - strae,

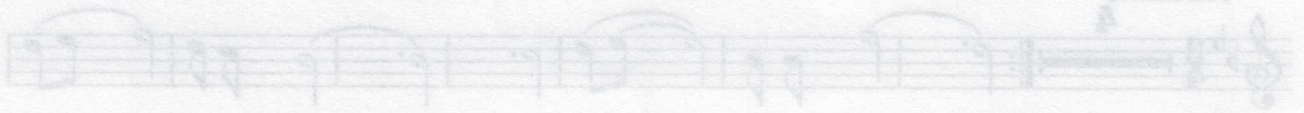
49

nunc et in ho - ra mor - tis no - strae. A - men.

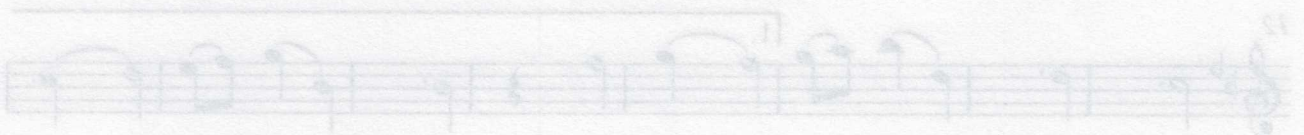
AVE MARIA

Zborski Polonaise

Andante



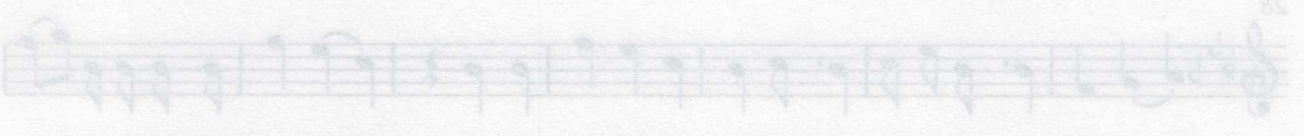
A - ve Ma - ri - a



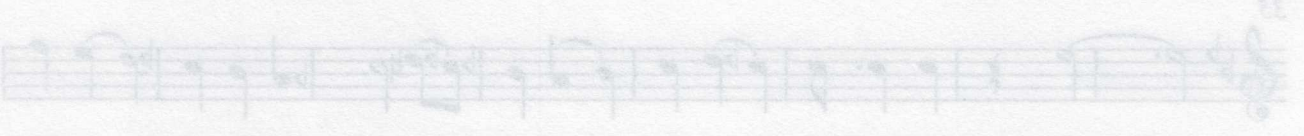
na - mi - nus te - cum



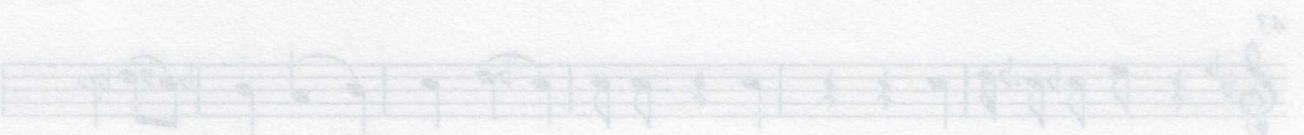
Do - mi - nus te - cum



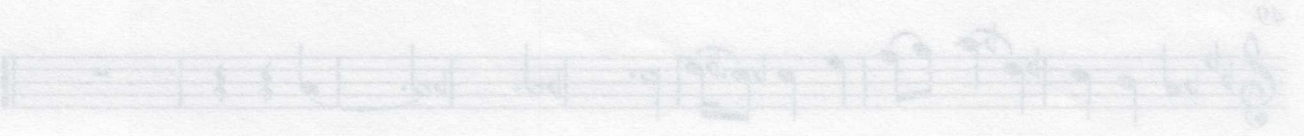
di - e in ma - tu - ri - bus et be - ne - dic - tus



San - cta Ma - ri - a, Ma - ter De - i, o - ra pro no - bis



pe - ca - to - ri - bus



muc et in ho - ra - tu - m

AVE MARIA

Zdeněk Pololánik

Andante

Soprano

Piano

4

S.

A - - - - - ve Ma -

Pno.

7

S.

ri - - - - a gra - - - -

Pno.

10

S.

- - - ti - a ple - - - - na

Pno.

AVE MARIA

2

13

S. Do - - - mi - - - nus - - - te - - -

Pno.

16

S. cum Do - - - mi - - - nus - - -

Pno.

19

S. te - - - cum. te - - -

Pno.

22

S. cum. Do - - - mi - - - nus - - -

Pno.

25

S. te - - - cum, be - - - ne -

Pno.

28

S. - di - - cta tu in mu - li - e - - ri - bus

Pno.

31

S. et be - ne - di - ctus fruc - tus

Pno.

34

S. ven - tris tu - i Je - sus.

Pno.

37

S. San - - cta Ma - ri - - a, Ma - - ter

Pno.

40

S. De - - i, o - - ra pro no - - bis

Pno.

43

S. pec - ca - to - ri - bus nunc et in

Pno.

46

S. ho - - ra mor - - tis no - - strae,

Pno.

49

S. nunc et in ho - ra - mor - tis no -

Pno.

52

S. strac. A - - -

Pno.

54

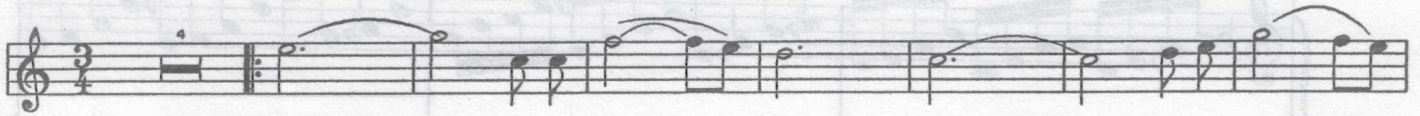
S. men.

Pno.

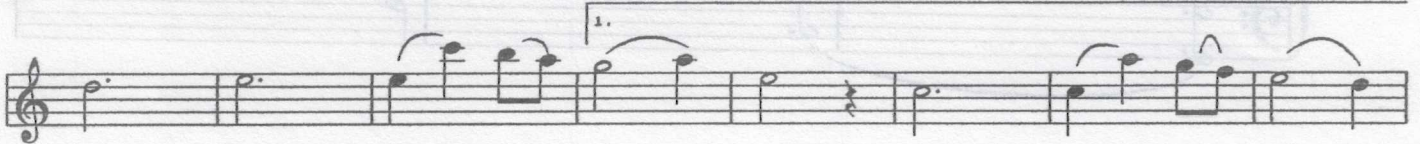
Zdeněk POLOLÁNIK

AVE MARIA

Andante



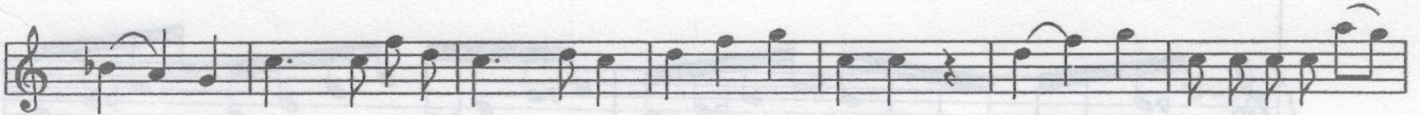
A - ve Ma - ri - a gra - ti - a ple - -



na, Do - mi - nus te - cum, Do - mi - nus te -



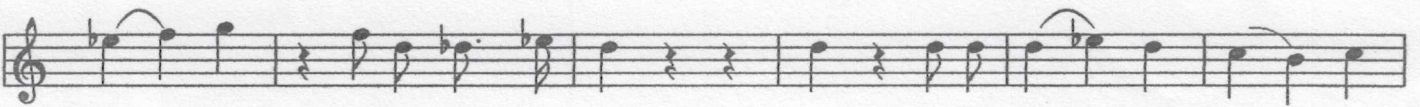
cum. te - cum. Do - mi - nus te - cum, be - ne -



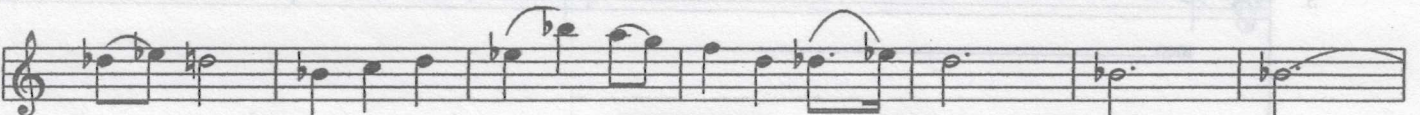
di - cta tu in mu - li - e - ri - bus et be - ne - dic - tus fruc - tus ven - tris tu - i Je -



sus. - San - cta Ma - ri - a Ma - ter De - i, o - ra pro



no - bis pec - ca - to - ri - bus, nunc et in ho - ra mor - tis



no - strae, nunc et in ho - ra - mor - tis no - strae. A - men.

